



**DIPLOMATIC
HYDRAULICS**

21 220/105 ED



RQ*-W

PRESSURE RELIEF VALVE

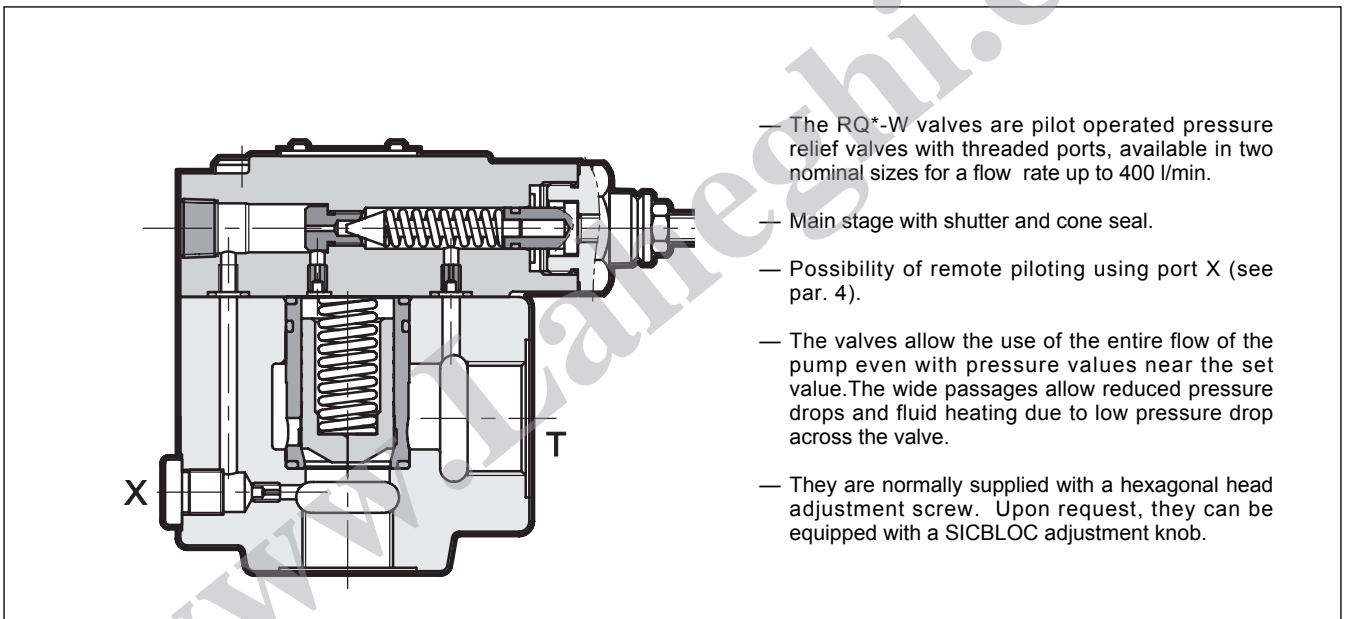
SERIES 41

THREADED PORTS

p max **350** bar

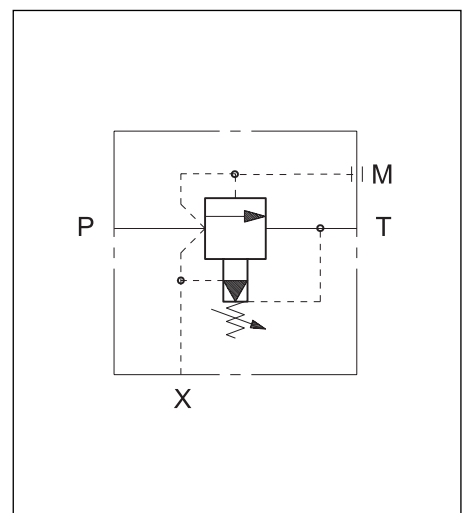
Q max (see performance ratings table)

OPERATING PRINCIPLE



PERFORMANCE RATINGS		RQ5-W	RQ7-W
(measured with mineral oil of viscosity 36 cSt at 50°C)			
Maximum operating pressure	bar	350	
Maximum flow rate	l/min	250	400
Ambient temperature range	°C	-20 ÷ +50	
Fluid temperature range	°C	-20 ÷ +80	
Fluid viscosity range	cSt	10 ÷ 400	
Recommended viscosity	cSt	25	
Degree of fluid contamination	According to NAS 1638 class 10		
Mass	kg	4,1	8

HYDRAULIC SYMBOL





1 - IDENTIFICATION CODE

R	Q	-	W	/	/	41	/
----------	----------	----------	----------	----------	----------	-----------	----------

Pressure control valve

Nominal dimension **5** = DN 25
7 = DN 40

Threaded ports BSP

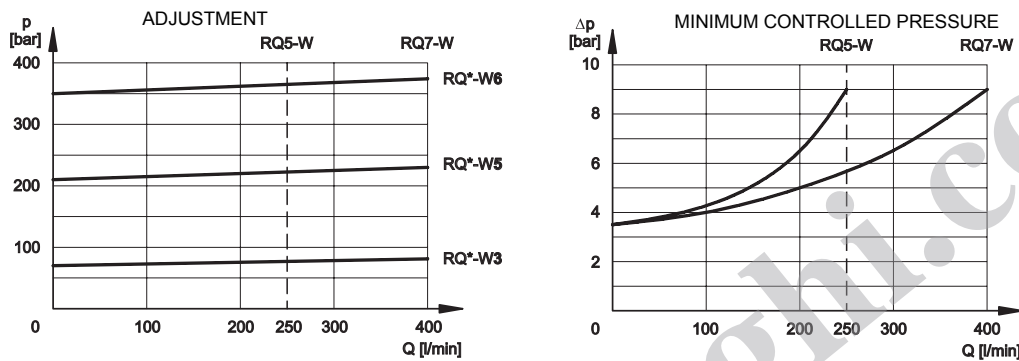
Pressure adjustment range:
3 = up to 70 bar
5 = up to 210 bar
6 = up to 350 bar

Seals:
omit for mineral oils
V = viton for special fluids

Series No. (the overall and mounting dimensions remain unchanged from 40 to 49)

M = adjustment with SICBLOC knob
(omit for adjustment with hexagonal head screw)

2 - CHARACTERISTIC CURVES (values obtained with viscosity of 36 cSt at 50°C)



3 - HYDRAULIC FLUIDS

Use mineral oil-based hydraulic fluids HL or HPL type, according to ISO 6743/3. For fluids HFD-R type (phosphate esters) use FPM seals (code V). For the use of other fluid types such as HFA, HFB, HFC, please consult our technical department.

Using fluids at temperatures higher than 70°C causes a faster degradation of the fluid and of the seals characteristics.

The fluid must be preserved in its physical and chemical characteristics.

4 - OVERALL AND MOUNTING DIMENSIONS

dimensions in mm

1	Hexagonal head adjustment screw. Spanner 13. Clockwise rotation to increase pressure
2	Remote piloting port X 1/4 BSP
3	Outlet port T RQ5-W: 1" BSP RQ7-W: 1" 1/2 BSP
4	Pressure port P RQ5-W: 3/4" BSP RQ7-W: 1" 1/4 BSP
5	Pressure gauge port 3/8 NPT
6	SICBLOC adjustment knob. To operate, push and rotate at the same time.

	A	B	C	D	ØE	F	G	H	I	L	M	ØN	ØO
RQ5-W	168	98	49	4	22	21.5	44.5	123	80	87	53	35.5	46
RQ7-W	168	98	49	4	22	43	59.5	14.5	102	109	68	50	56



DIPLOMATIC OLEODINAMICA SpA
 20025 LEGNANO (MI) - P.le Bozzi, 1 / Via Edison
 Tel. 0331/472111 - Fax 0331/548328